

# Valve for water pipes in apartment

In all our apartments there are valves that can be used to shut off water throughout your home (both hot and cold). It is very important to know where these are located and that these are functional in order to be able to limit water damage in the event of a water leak. It is also important if you, as a condominium owner, want to change e.g. a water faucet in the apartment. You can also shut these valves off if you are going away for a longer period of time and want to be sure no water leaks will occur.

These valves must be exercised at least once a year to avoid sticking. If these valves move slowly or get stuck and you turn them, there is a risk that water will start to drip. This must then be sealed/tightened.

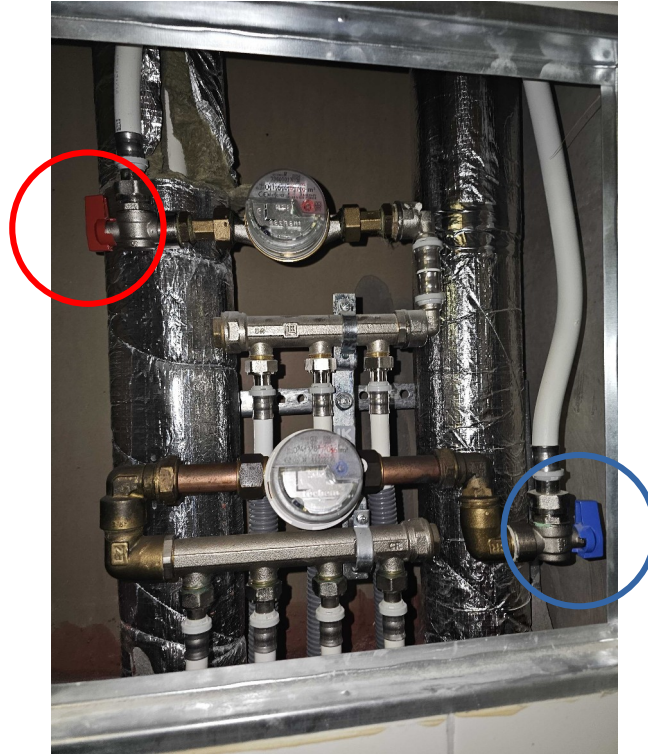
Here are instructions on how to find the valves and how to turn off the hot and cold water in the apartment.

It is the condominium owners responsibility that the valves works and does not leak.

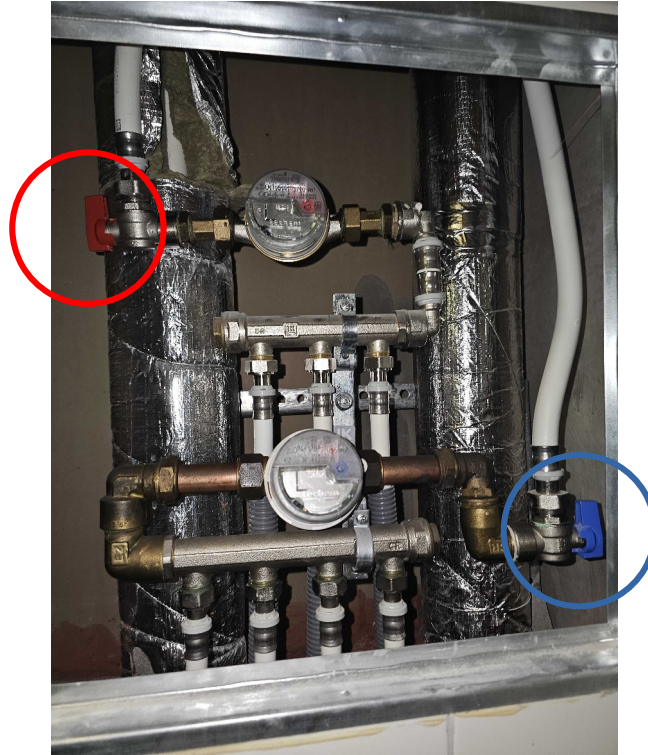
1: Locate the hatch, which is usually found on a wall in the bathroom. See example below image:



2: Locate the valves for hot and cold water. See example below image: Blue ring is cold water, red ring is hot water.



3: Exercise the valve: this is done by turning the valve 90 degrees (so that it closes) and then back 90 degrees (so that it opens). Repeat the procedure a few times until the valve turns smoothly. **NOTE: if the valve moves very slowly or binds - be careful not to break it and cause a water leak.**



4: When the hot and cold water valves are shut off - try turning on hot and cold water on some taps in the apartment. No water coming from the tap? Then the valves works as they should. Then turn back the valves for hot and cold water and see that water flows from the taps as it should when the valves are open.

5: Leave the hatch open for a while and see if it starts to drip from any valve/coupling. Also make sure that the small white pipe on the wall under the hatch is free of debris. The purpose of the pipe is to lead out any water from the space behind the hatch onto the bathroom floor. This is so that you as a resident can detect any leakage when the hatch is closed.

If there is a leak from any fitting or valve, this must be fixed. For example, you can contact NABO for assistance.

Do you have any questions or need help?

- please contact the board or NABO